

- Provides economical WAN access for routers
- Operates on 56 Kbps Basic DDS or Clear Channel 64 Kbps service
- Automatic service and line rate detection
- Easy DIP switch configuration
- V.54 loopback, digital loopback, and network loopbacks
- LED status indicators
- V.35 DTE interface
- Compact size

Economical WAN Access for Routers

The Excalibur™ Digital Access Product (DAP) 6456 digital service unit (DSU) provides a versatile, easy-to-use interface between your data terminal equipment (DTE) and digital data service networks. The unit is specifically designed to provide economical WAN access for routers. It supports synchronous data transmission over full-duplex channels at speeds of 56 and 64 Kbps...providing efficient and economical performance.

Choice of Digital Data Service

The DAP 6456 offers the versatility to change between services as your needs and tariffs change. You can select 56 Kbps Basic DDS or Clear Channel 64 Kbps service.

Automatic Service and Line Rate Detection

The unit's service and line speed can be set automatically or manually via DIP switches. With automatic detection enabled, the unit automatically configures itself to match the type of service to which it is connected.

Easy to Install and Use

The DAP 6456 is designed to make installation, operation, and maintenance easy for even the most non-technical user. The unit can be quickly installed with simple cable and power connections. Configuration parameters are minimal. All configuration and diagnostic parameters can be set in a minute via four DIP switches located on the front of the unit.

Fast and Easy Fault Isolation

Diagnostic tests allow you to quickly isolate the source of network malfunctions. Available tests include local digital loopback and remote V.54 loopback. The DAP 6456 supports CSU loopback, latching loopback, and non-latching loopback tests initiated by the network. Additionally, the unit automatically runs an internal self-test each time it is powered up.

Instant Status Monitoring

Five LED indicators, located on the front of the unit, allow you to monitor the DAP 6456's operating status at a glance. The LEDs inform you when power is applied to the unit, when a loopback test is active, and when an alarm condition is present.

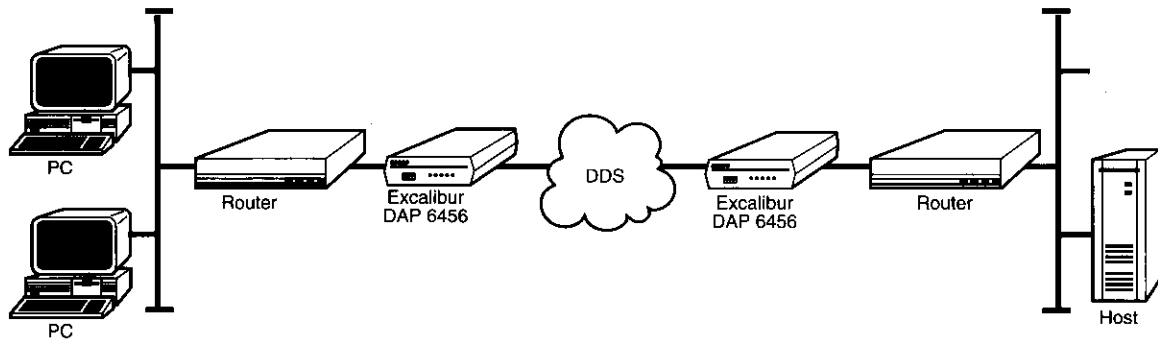
Compact Size

The standalone DAP 6456's compact size keeps space requirements to a bare minimum. The unit is powered by a small external power supply, which can be easily replaced if required.

Technical Specifications

Line Requirements	Operates on 56 Kbps Basic DDS and Clear Channel 64 Kbps services
Network Configurations	Basic DDS service: point-to-point and multipoint
	Clear Channel 64 Kbps Service: point-to-point
DTE Speeds	Synchronous: 56 and 64 Kbps
DTE Interface	CCITT V.35
Channel Interface	8-position keyed modular jack
Receiver Sensitivity	0 to 45 dB loop loss
Carrier Mode	Constant, switched
Clocking	Slave, external
Tests	Self, local digital loopback, remote V.54 digital loopback
Network Diagnostics	CSU loopback, latching loopback, non-latching loopback
LED Indicators	Power, loss of signal (LOS), receive data, transmit data, loop
Approvals	FCC Part 15 and Part 68, Industry Canada, UL and CSA approved
Power Supply	External, 120 VAC, 60 Hz
Physical Specifications	Height 1.50" (3.81 cm)
	Width 4.94" (12.55 cm)
	Depth 5.19" (13.18 cm)
	Weight 1 lb. (.45 kg)

Our policy of continuous development may cause the information and specifications contained herein to change without notice. Racal, Racal-Datcom, and Excalibur are trademarks of Racal Electronics Plc. All other logos and product names are trademarks or registered trademarks of their respective companies.
 ©1996 Racal-Datcom, Inc. All rights reserved. Printed in U.S.A.



Typical Excalibur DAP 6456 Application

Racal Data Group

Internet: <http://www.racal.com/rdg>
 USA: 954-846-4811 or 1-800-RACAL-55
 Canada: 905-602-7755
 United Kingdom: 44-1256-763911
 Germany: 49-6102-2020
 Singapore/SE Asia: 65-779-2200

France: 33-1-4933-5800
 Italy: 39-331-426-111
 Netherlands: 31-15-269-8282
 Hong Kong: 852-2541-2668

China: 86-10-6500-7460
 Belgium: 32-2-725-3450
 Australia: 61-2-9936-7000
 Japan: 81-3-5322-2965

